

# Designated Industrial Property Assessments

---

Provincial assessment update

Aaron Slotsve, Acting Director

March 4, 2020



# What is Designated Industrial (DI) Property?

---

- Facilities regulated by the Alberta Energy Regulator, Canadian Energy Regulator or Alberta Utilities Commission
- Linear property (wells, pipelines, railways, telecommunications and electric power systems)
- Property designated as a 'major plant' by the [Alberta Machinery and Equipment Assessment Minister's Guidelines](#)
- Land and improvements associated with any of the above

# DI Property Timeline – 2018 to Present

---

January 1, 2018

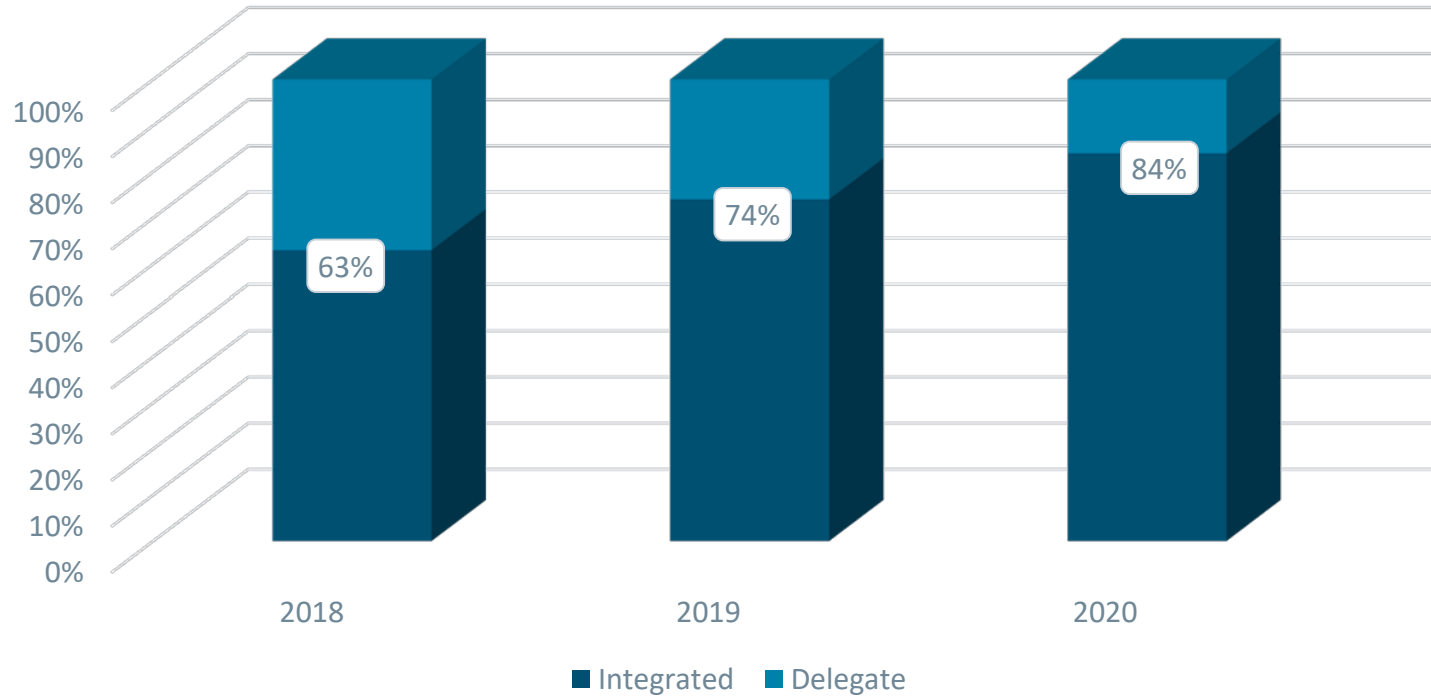
- integration of DI (non-linear) property began
- implementation of the GoA CAMA lot system
- field inspection processes developed and tested

2019

- request of Information (RFI) streamlined and improved
- standardization of data
- further process refinement and improvement



# Integration Update



# Centralization of Designated Industrial Property Assessments

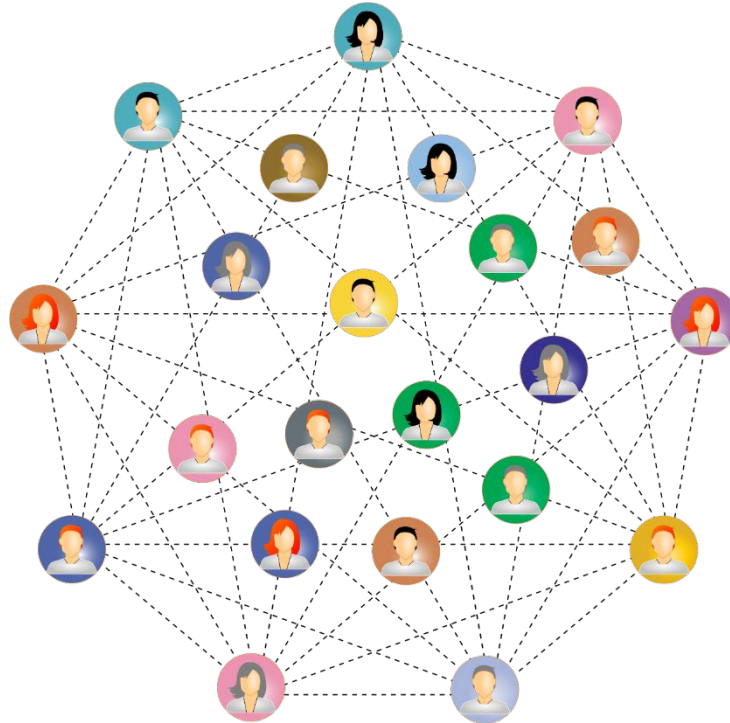
---



# Who Assesses DI Property

---

- Experienced assessors
- Engineers
- Data analysts
- Technicians



- GIS specialists
- Accountants
- Delegate assessors

# 2019 Assessment Year / 2020 Tax Year

---

- Provincial assessment roll produced and sent:
  - Linear DI property assessment rolls and notices sent in January 31, 2020
  - Other DI property assessment rolls and notices sent February 28, 2020
- Improving consistency in databases, refining standard operating procedures
- Innovating new methods for inspection selection, data gathering and analysis

# 2019 Assessment Year / 2020 Tax Year

---

## Linear Property

(in millions)	2019AY Assessment	% Change
Pipelines (including gas dist.)	\$27,693.0	-2.6%
Wells	\$24,763.0	-4.9%
Electric Power Systems	\$9,131.7	4.1%
Electric Power Generation	\$6,793.9	-3.1%
Telecommunication & Cable	\$2,144.7	2.1%
Railway	\$794.8	3.2%
Totals	\$71,321.1	-2.5%



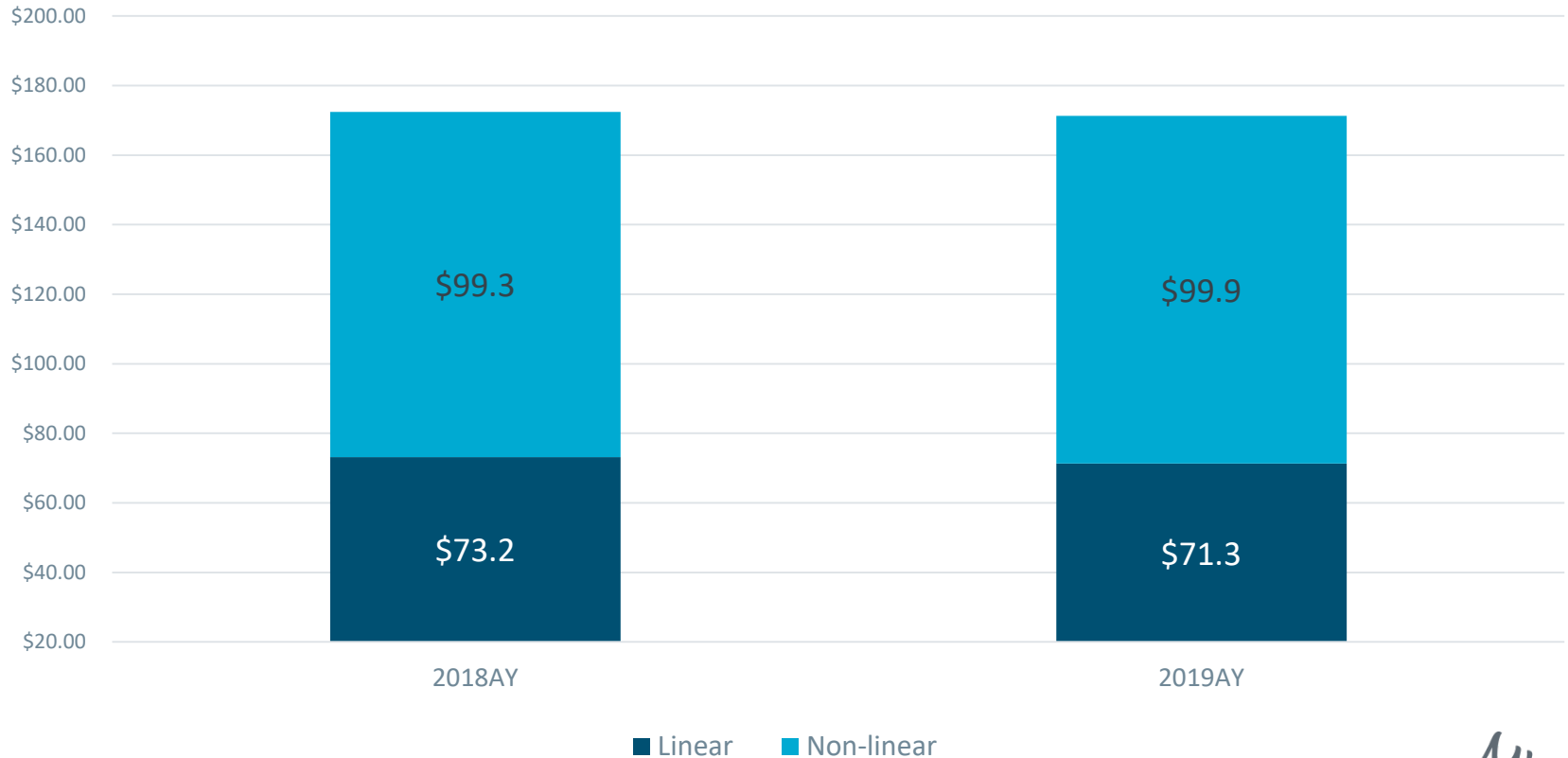
# 2019 Assessment Year / 2020 Tax Year

---

## Industrial Property

(in \$000's)	2019AY Assessment	% Change
Machinery & Equipment	\$85,028.7	1.0%
Buildings, Structures and Land	\$14,898.1	-0.7%
Totals	\$99,926.8	0.7%

## DI property 2018 and 2019 Assessment Year Comparisons (in billions)



A large, stylized lightbulb icon in a light blue color, centered on the page. The lightbulb has a glowing effect with several short, thick lines radiating outwards from its top half, resembling sunbeams or light rays. The text "2020 Priorities and Initiatives" is overlaid in white on the lightbulb's glass portion.

# 2020 Priorities and Initiatives

# 2020 Priorities

---

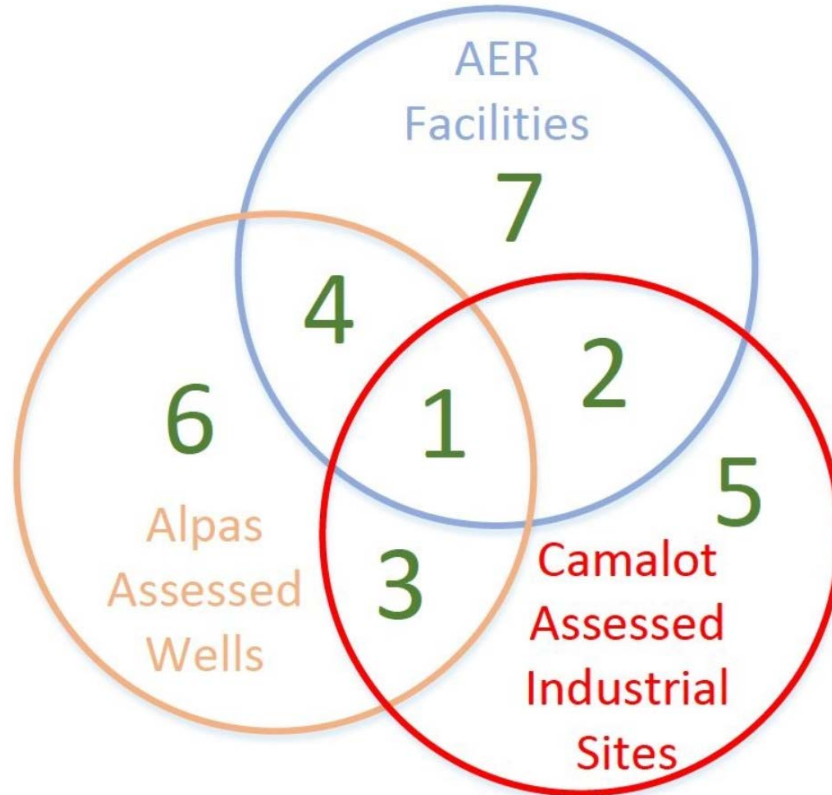
- Fill vacant positions / train and develop staff
- Continue testing mapping project initiative
- Begin implementation and testing of long-term IT solution that combines linear and industrial property into a single system
- Further develop stakeholder relationships



# Mapping Project

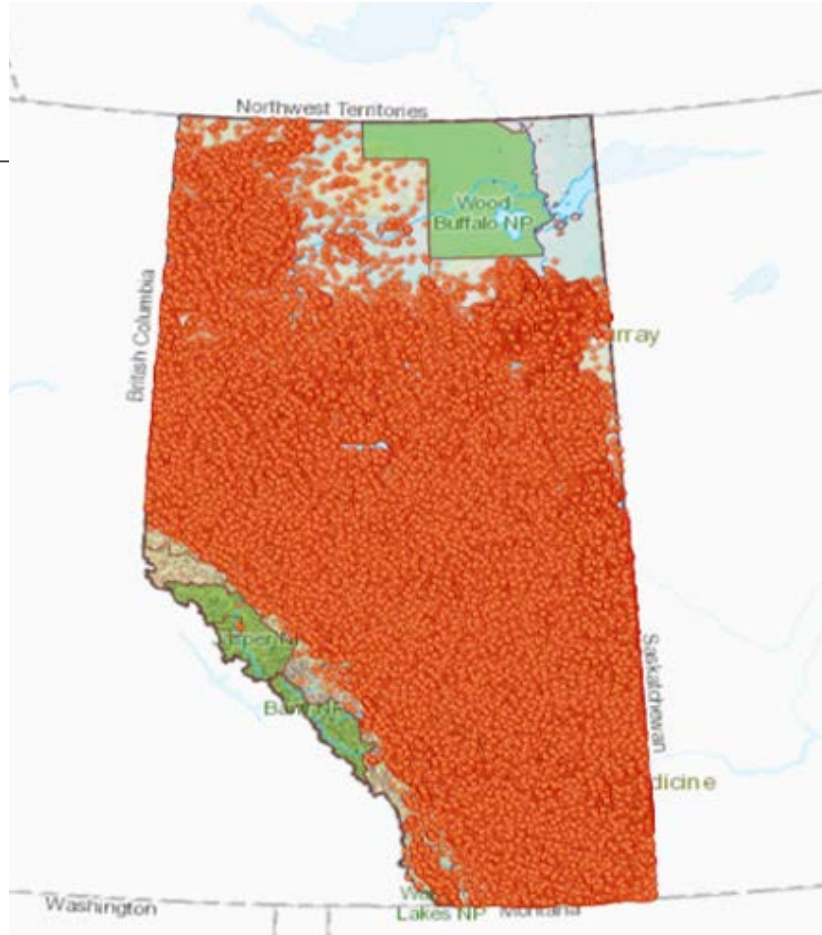
---

- Integrate multiple data sources
- Create informational model for field testing and validation



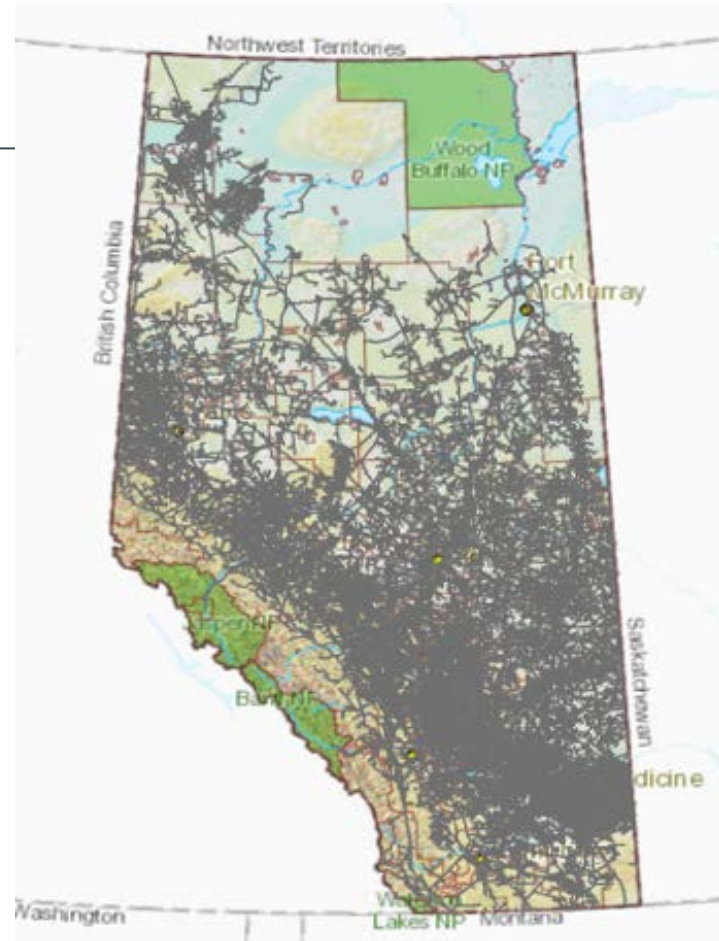
# Wells in Province

---



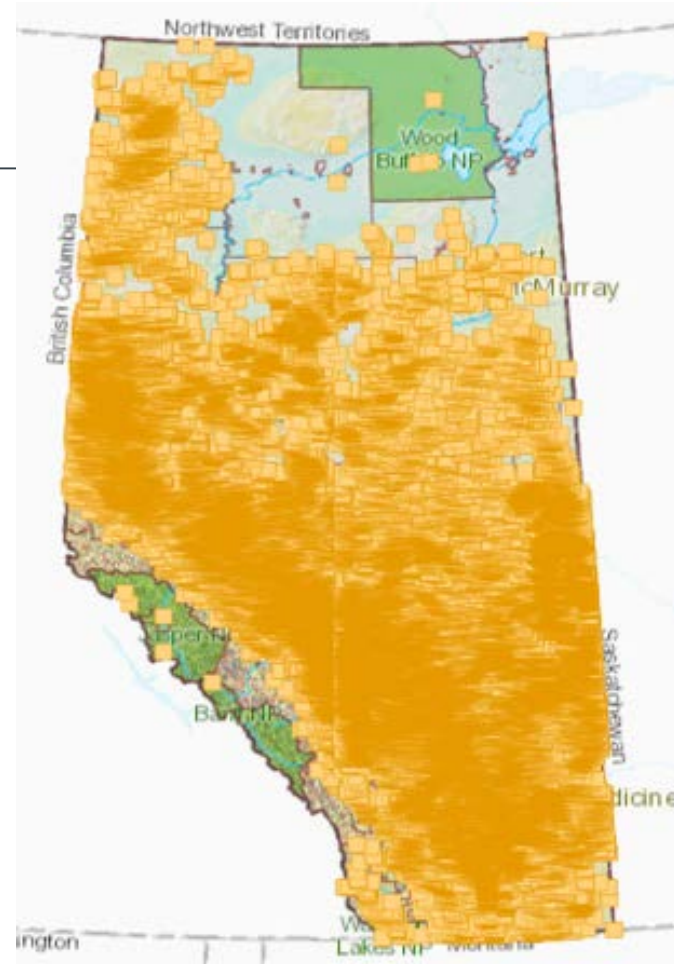
# Pipelines in Province

---



# Facilities in Province

---



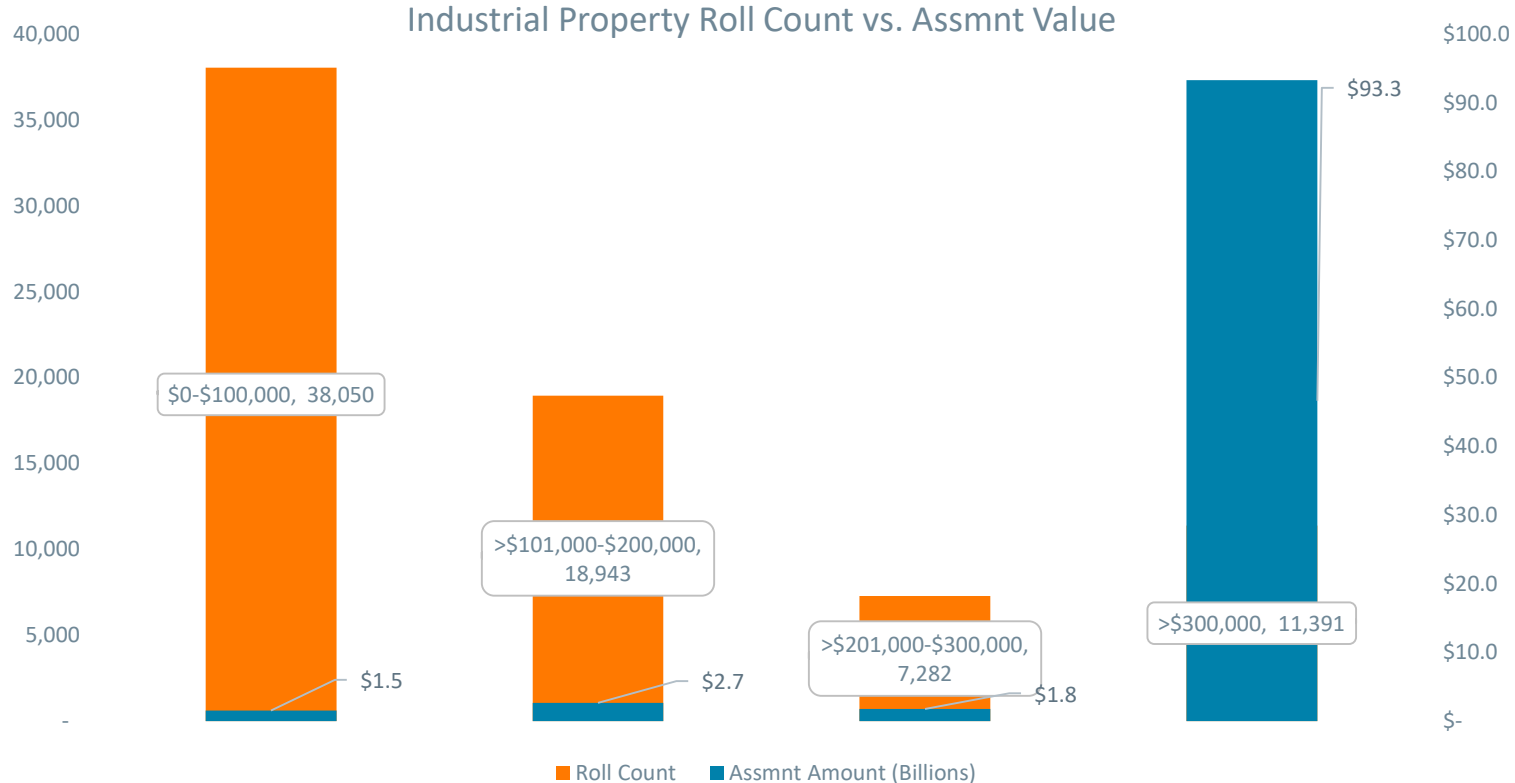


# Mapping Project

- Look for synergies and gaps in the data
- Most efficient use of time spent in field
- Establish linkages between linear property (i.e. wells) and machinery and equipment



# Makeup of Industrial Property



A large, stylized lightbulb icon in a light blue color, centered on the page. The lightbulb has a glowing effect with several short, thick lines radiating outwards from its top half, resembling sun rays or light beams. The text "Assessment Appeals" is overlaid in white on the lightbulb's glass part.

# Assessment Appeals

# Appeals for 2018 & 2019 Tax Year

---

## Linear Property

- Two current appeals
- Both coal-fired power generation facilities



## Industrial Property

- Ten current appeals (some likely combined due to similar issues)
- An additional eleven appeals have been resolved and withdrawn



# Other Government Priorities

# Alberta Assessment Landscape - 2020

---

## Government Initiatives and Priorities

- Red Tape Reduction Initiative
- Shallow Gas Tax Relief Initiative
- Implementation of Assessment Model Review and RIPA



Questions?

## DI Property (linear) assessment change summary

Largest increases		Largest decreases	
MD of Greenview	5%	Cypress County	(17%)
RM of Wood Buffalo	4%	County of Newell	(12%)
City of Calgary	4%	Special Areas Board	(7%)
Yellowhead County	1%	Kneehill County	(16%)
Saddle Hills County	4%	Mackenzie County	(14%)



## DI Property (non-linear) assessment change summary

Largest increases		Largest decreases	
MD of Greenview	18%	Strathcona County	(2%)
Lac la Biche County	18%	Lethbridge County	(69%)
County of Grande Prairie	16%	Mackenzie County	(18%)
Yellowhead County	5%	MD of Bonnyville	(4%)
Saddle Hills County	8%	ID No. 349	(3%)